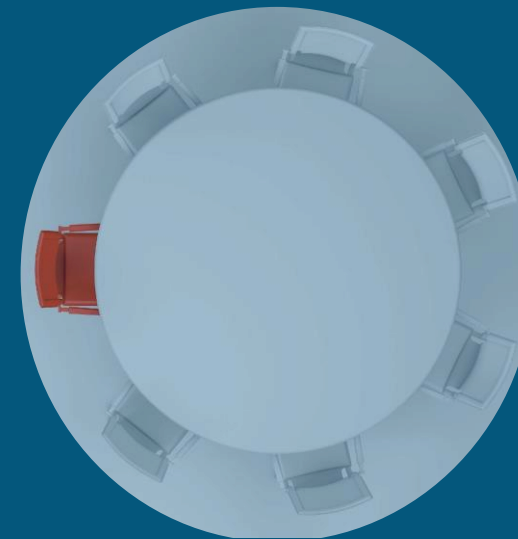


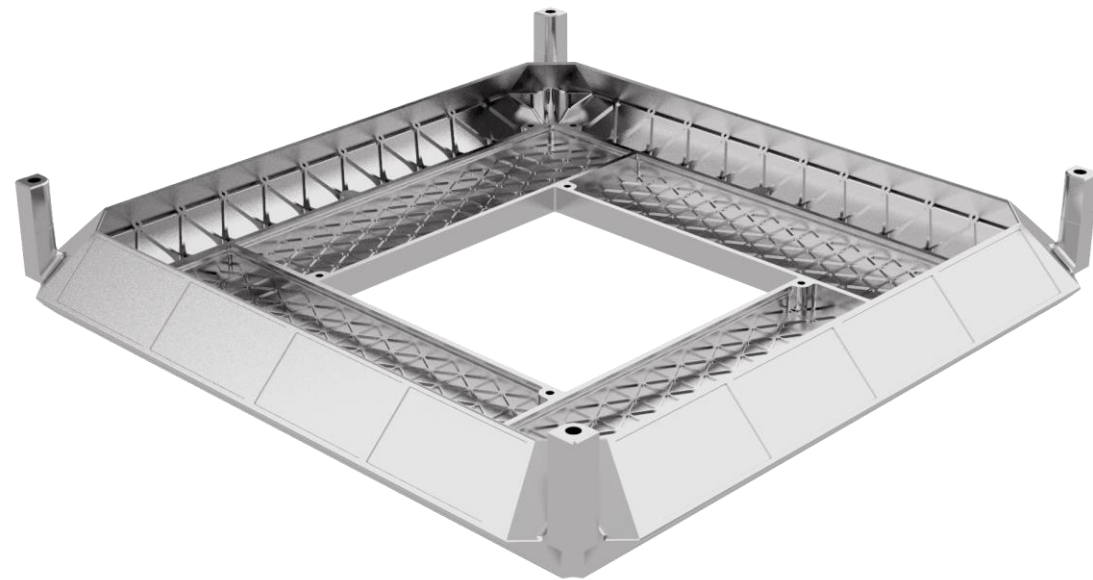
# Introduction: Visign Ltd



# Entity Profile

Our entity profile: Technology Adopter

We have developed and prototyped an open layout platform (bus) for small satellites. The satellite bus is the structure that integrates and organises the parts of the satellite. The Astro Plane bus (satellite platform) has a “robotic-friendly” open layout





# Challenge to address in the pilot - 1 min

Our idea to be developed and tested in Open Call 1: Human robotic synergy in small-satellite platform assembly procedure

Problem statement:

- The satellite assembly is labour-intensive, mostly handwork
- The automation is hard due to the complex geometry of current designs
- The demand for automation of satellite interaction is vast with the event of satellite super constellations

# What partner(s) are we seeking?

The project needs a partner with relevant expertise and equipment to demonstrate a human robotic assembly.



This is a good example of what we are looking for: 'Robotic Screwdriving for Assembly Processes' By Omron